



nora **stairwell solutions**

**nora**<sup>®</sup>  
by **Interface**<sup>®</sup>

# Need tough, attractive floors that last?

## nora rubber flooring has you *and your stairs covered.*

Whether you choose norament® stairtreads or pair nora® rubber flooring with nora stair nosings, your steps will deliver the high performance, ease of maintenance and long-lasting good looks you expect from nora. And, they'll work with other nora flooring to create a seamless flow through your facility.

### norament stairtreads

On angled, straight stairs, look to norament stairtreads. The all-in-one nosing, tread and riser makes installation simple and efficient. They are installed with nora® stepfix™ 240 double-sided tape—an immediate trafficking solution for an all-around fast turnover.

### nora flooring with nora stair nosings

For other stairwells, including spiral staircases, choose a nora stair nosing from our range of accessories to pair with your preferred noraplan® or norament® flooring.

## Contents

### norament stairtreads

norament arago stairtreads	4
norament grano stairtreads	5
norament hammered stairtreads	8
norament round stairtreads	9
norament satura stairtreads	12
norament 920 stairtreads	13
Specifications	15

### nora stair accessories

nora stair nosings	18
nora stairwell installation materials	19
nora visually impaired strips	20

Why nora rubber flooring?	21
---------------------------	----





# norament<sup>®</sup> arago<sup>™</sup> stairtreads Color Range

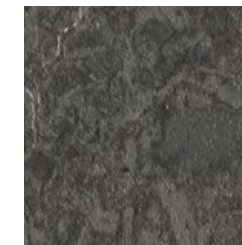
Flat, direction-oriented relief structure with fine grain design and modern marbling.



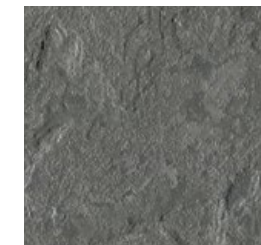
5171 FORTITUDE



5172 STAMINA



5175 UNITY



5177 BALANCE



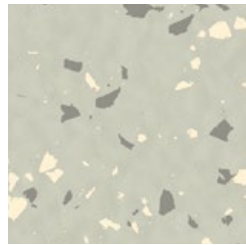
5178 CALM



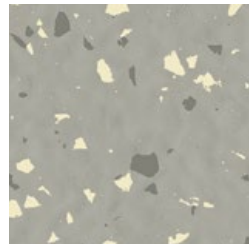
5179 TRANQUIL

# norament<sup>®</sup> grano<sup>™</sup> stairtreads Color Range

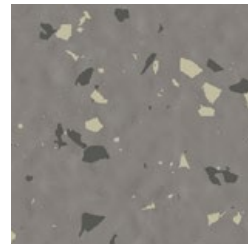
Rich, contrasting granular design with a hammered surface.



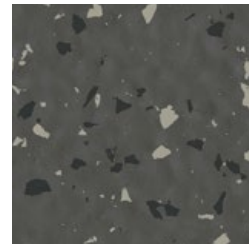
5301 WHITE FIR



5302 ANGELICA ROOT



5303 FRANKINCENSE



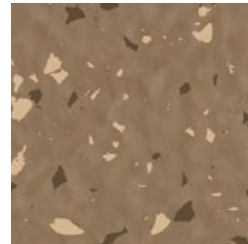
5304 BLACK PEPPER



5313 MARJORAM



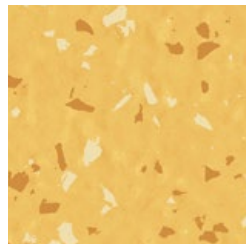
5314 HENNA



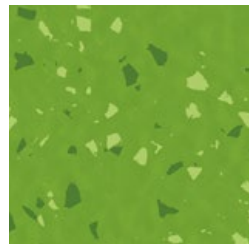
5315 CEDARWOOD



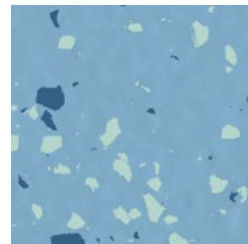
5308 MYRRH



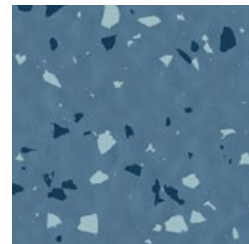
5329 BERGAMOT



5325 BALSAM



5317 AGAPANTHUS



5318 BLUE TANSY



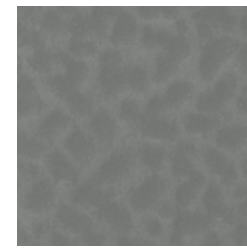


# norament<sup>®</sup> hammered stairtreads Color Range

Monochrome with a hammered surface.



5336 RHINO



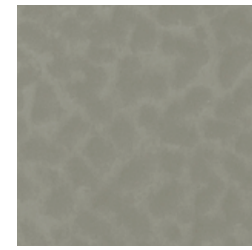
0884 DUST GREY



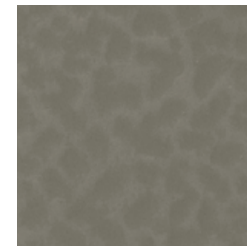
5337 ASH



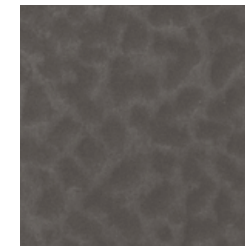
0702 BLACK



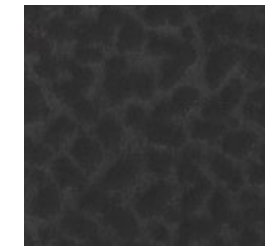
0007 ALUMINUM



0882 PLATINUM GREY



0749 STONE GREY



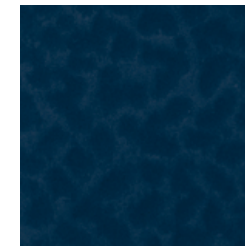
0716 SLATE GREY



5343 EVERGREEN



0319 SLATE BLUE



0733 STEEL BLUE

# norament<sup>®</sup> round stairtreads Color Range

Monochrome with a classic round pastille surface.



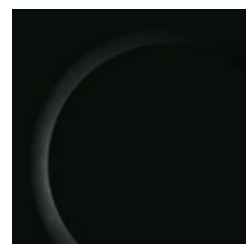
5336 RHINO



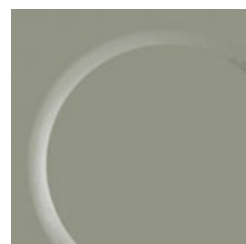
0884 DUST GREY



5337 ASH



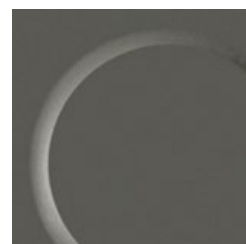
0702 BLACK



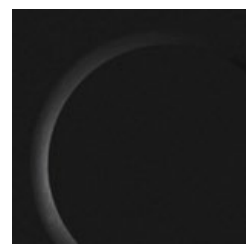
0007 ALUMINUM



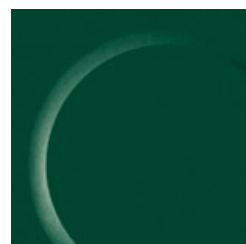
0882 PLATINUM GREY



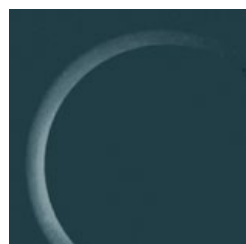
0749 STONE GREY



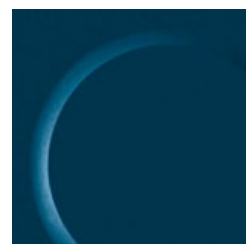
0716 SLATE GREY



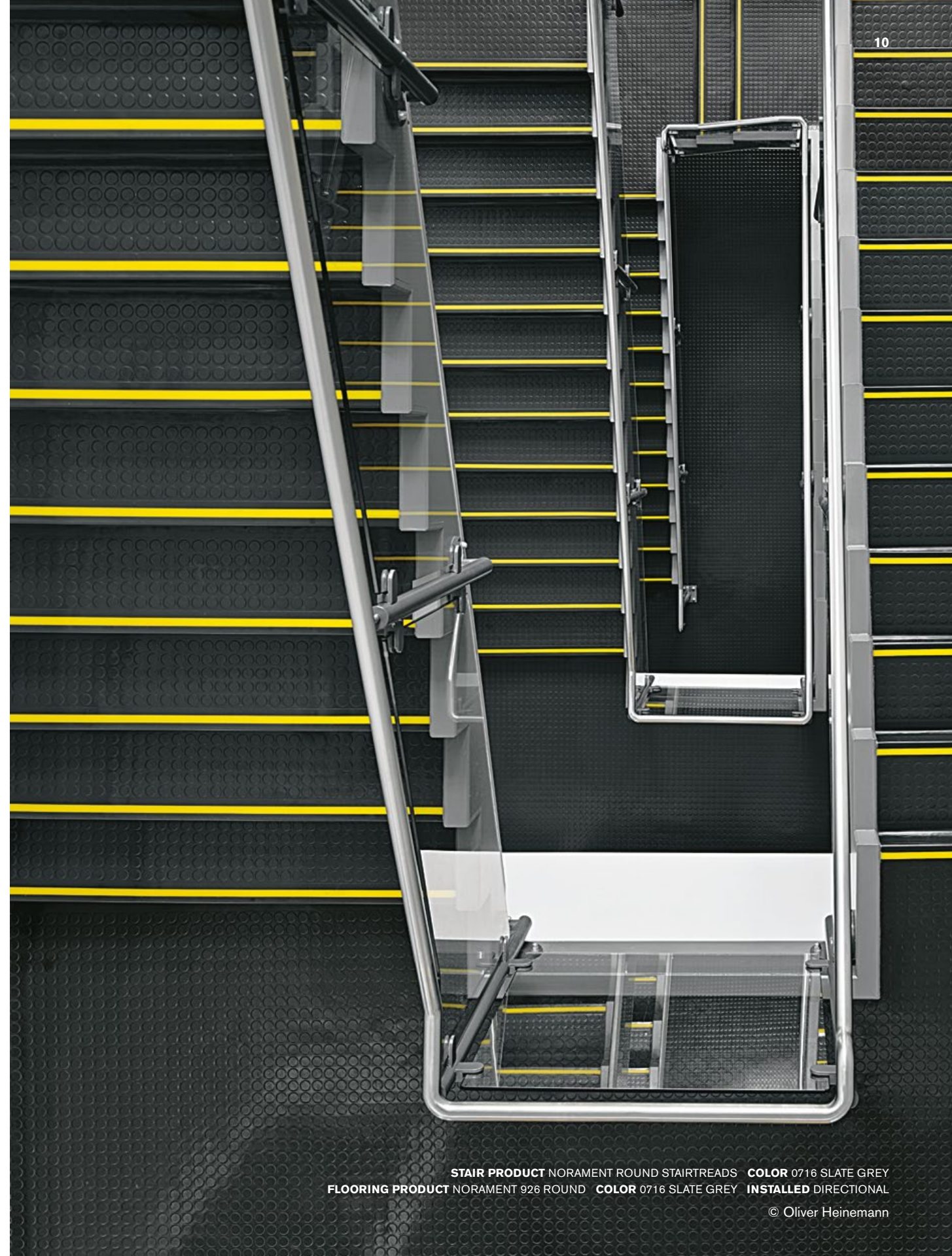
5343 EVERGREEN



0319 SLATE BLUE



0733 STEEL BLUE

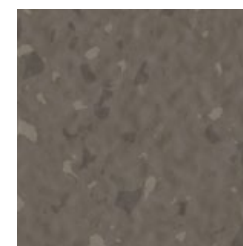


# norament<sup>®</sup> satura<sup>™</sup> stairtreads Color Range

Tone-in-tone granular design with a hammered surface.



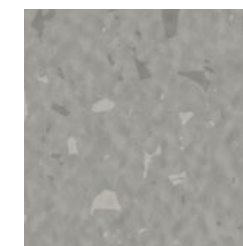
5102 GRUS



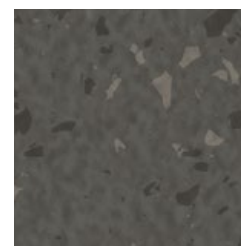
5107 CALLISTO



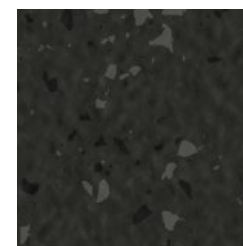
5110 ARA



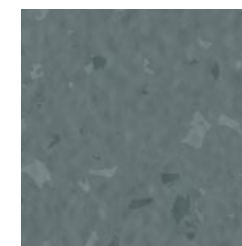
5114 CIRCINUS



5115 HERCULES



5116 ARCTURUS



5127 VELA



5273 DORADO



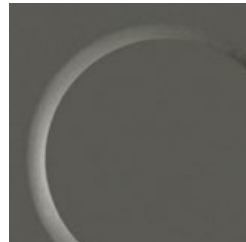
# norament<sup>®</sup> 920 stairtreads Color Range

 (Class A Fire-Rated)

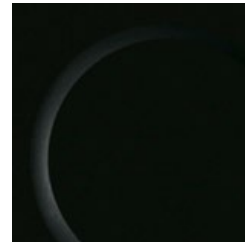
Monochrome with a classic round pastille surface for special fire protection requirements.



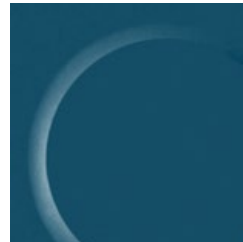
0884 DUST GREY



0749 STONE GREY

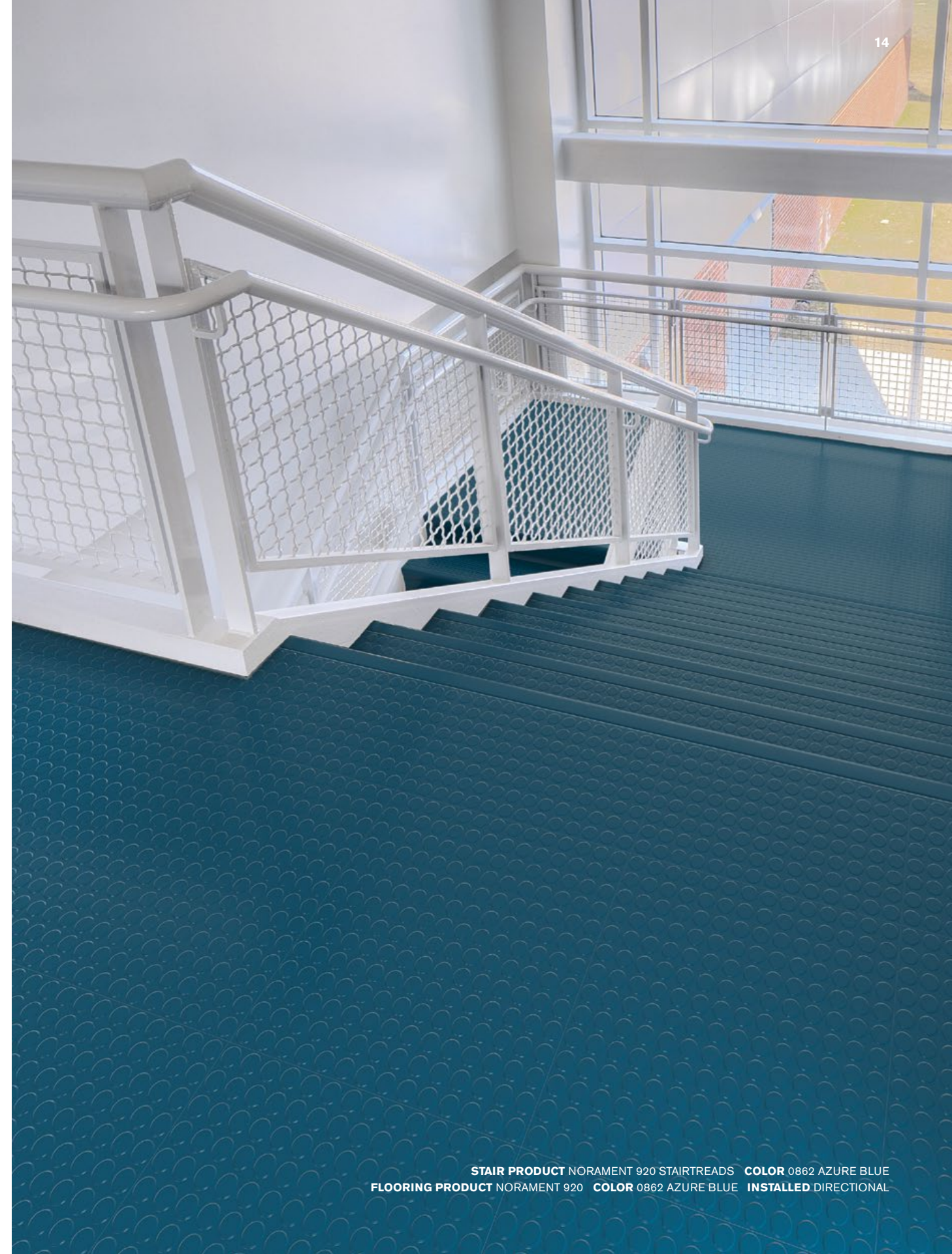


0702 BLACK



0862 AZURE BLUE

- Meets Class A (ASTM E84 Tunnel Test) with a flame spread rate of 15 and smoke development of 300
- CAN/ULC S102.2 Surface Burning Characteristics test results: FSR of 5 and SDC of 30 achieved
- Ideal flooring for emergency exits and stairways
- For use in egress areas above 75 feet according to International Building Code (IBC)
- Passes EN/ISO 26987 for oil & grease resistance




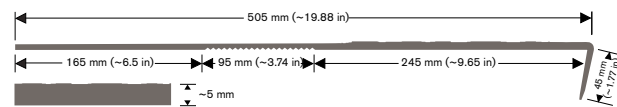


# Specifications

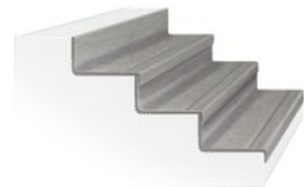
Our one-piece construction includes stair nosing, riser and tread and is built to fit straight steps with an angled edge. norament stairtreads are designed to withstand extremely heavy traffic while maintaining their good looks.

## norament arago stairtreads

-  6
- Art. 3170** - width 1285 mm (~50.59 in)
- Art. 3171** - width 1614 mm (~63.54 in)
- Art. 3172** - width 2004 mm (~78.89 in)

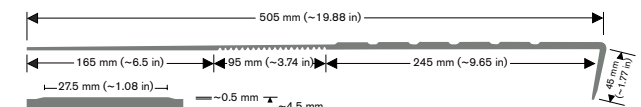


Product Construction Homogeneous Rubber Stair Tread  
 Class/ASTM F2169 Type TS, Class 2, Group 1 and/or 2, Grade 2  
 Surface Type Relief Structure and Smooth  
 Indoor Air Quality GREENGUARD Gold  
 CDPH 01350 Compliant  
 LEED v4 Contributes to multiple IEQ and MR credits

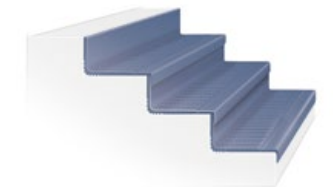


## norament round stairtreads


-  11
- Art. 465** - width 1285 mm (~50.59 in)
- Art. 466** - width 1614 mm (~63.54 in)
- Art. 467** - width 2004 mm (~78.89 in)

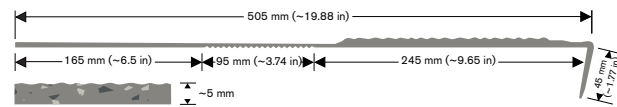


Product Construction Homogeneous Rubber Stair Tread  
 Class/ASTM F2169 Type TS, Class 2, Group 1 and/or 2, Grade 1  
 Surface Type Round Pastille and Smooth  
 Indoor Air Quality GREENGUARD Gold  
 CDPH 01350 Compliant  
 LEED v4 Contributes to multiple IEQ and MR credits

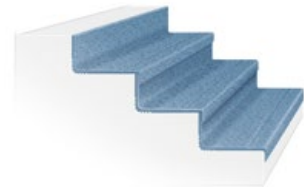


## norament grano stairtreads

-  12
- Art. 479** - width 1285 mm (~50.59 in)
- Art. 468** - width 1614 mm (~63.54 in)
- Art. 469** - width 2004 mm (~78.89 in)

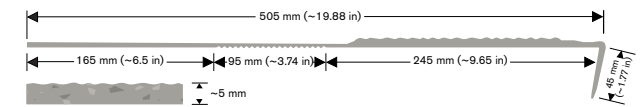


Product Construction Homogeneous Rubber Stair Tread  
 Class/ASTM F2169 Type TS, Class 2, Group 1 and/or 2, Grade 2  
 Surface Type Hammered and Smooth  
 Indoor Air Quality GREENGUARD Gold  
 CDPH 01350 Compliant  
 LEED v4 Contributes to multiple IEQ and MR credits

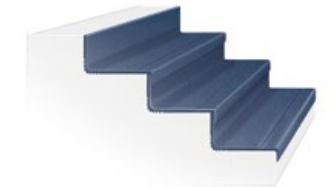


## norament satura stairtreads


-  8
- Art. 479** - width 1285 mm (~50.59 in)
- Art. 468** - width 1614 mm (~63.54 in)
- Art. 469** - width 2004 mm (~78.89 in)

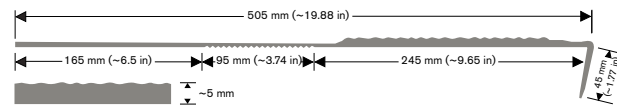


Product Construction Homogeneous Rubber Stair Tread  
 Class/ASTM F2169 Type TS, Class 2, Group 1 and/or 2, Grade 2  
 Surface Type Hammered and Smooth  
 Indoor Air Quality GREENGUARD Gold  
 CDPH 01350 Compliant  
 LEED v4 Contributes to multiple IEQ and MR credits

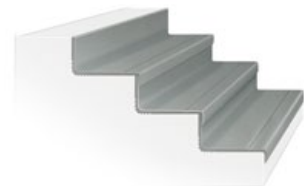


## norament hammered stairtreads


-  11
- Art. 479** - width 1285 mm (~50.59 in)
- Art. 468** - width 1614 mm (~63.54 in)
- Art. 469** - width 2004 mm (~78.89 in)

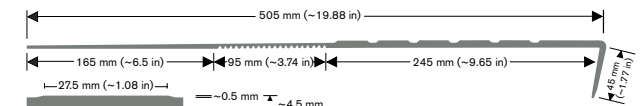


Product Construction Homogeneous Rubber Stair Tread  
 Class/ASTM F2169 Type TS, Class 2, Group 1 and/or 2, Grade 1  
 Surface Type Hammered and Smooth  
 Indoor Air Quality GREENGUARD Gold  
 CDPH 01350 Compliant  
 LEED v4 Contributes to multiple IEQ and MR credits

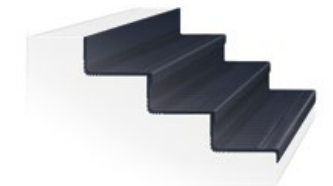


## norament 920 stairtreads

-  4
- Art. 465** - width 1285 mm (~50.59 in)



Product Construction Homogeneous Rubber Stair Tread  
 Class/ASTM F2169 Type TS, Class 2, Group 1 and/or 2, Grade 1  
 Surface Type Round Pastille and Smooth  
 Indoor Air Quality GREENGUARD Gold  
 CDPH 01350 Compliant  
 LEED v4 Contributes to IEQ credits

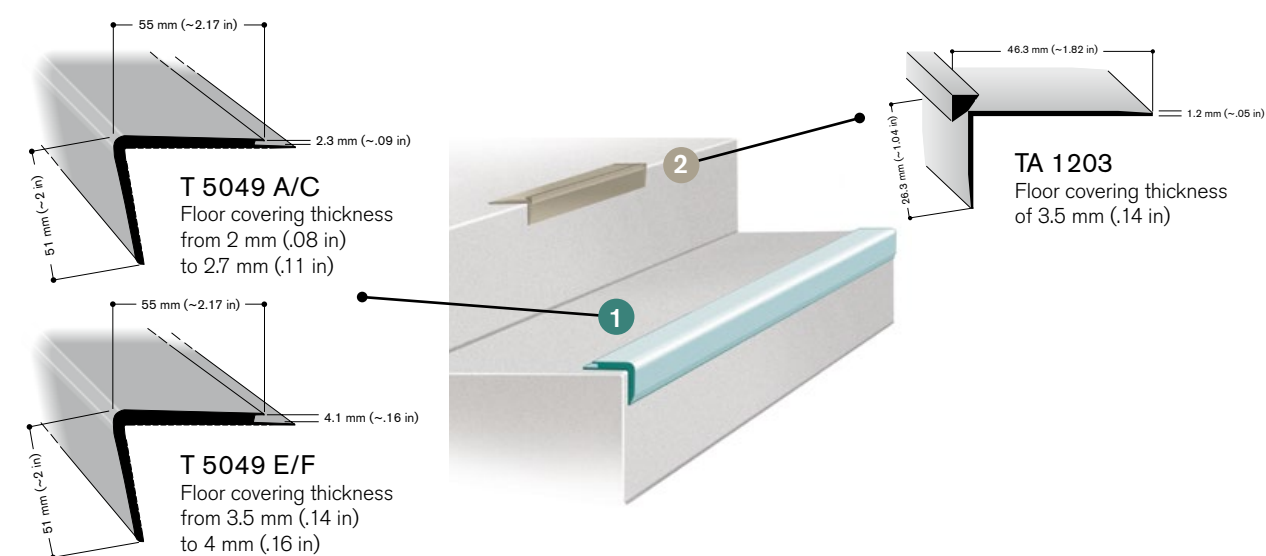


# nora stair accessories

## nora flooring with stair nosings

Bring the full repertoire of nora floor coverings to more types of stairs, including specialty stairs like spiral staircases, by pairing nora stair nosings with nora flooring.

nora stair nosings are designed for multiple flooring thicknesses and can be used on noraplan or norament floor coverings. Once the flooring is pre-cut to the dimension of an individual stair tread, the nora stair nosing insertion lip locks the flooring into place and protects the cut edge. And, nora rubber stair nosings are both impact and shock resistant.



## nora stair nosing

### 1 rubber stair nosing



Art. 805 – T 5049

Piece Length: 2.5 m (~8.2 ft)

For use on noraplan and norament floor coverings.

### 2 aluminum stair nosing



1 - Silver anodized aluminum

Art. 6648 – T 1203

Piece Length: 2.7 m (~8.9 ft)

For use with norament floor coverings. Check local statutes to ensure code compliance.

## Standard colors:



0702



0716



0749



0884



5301



5305



5310



6179

# nora stair accessories

## (continued)

### nora stepfix 240

nora stepfix 240 is an innovative and cost-effective adhesive tape suitable for new builds and renovation projects. Specifically designed for norament stairtreads, nora stepfix 240 makes installation 3-5 times faster than conventional installation methods, and the process is odorless, clean, and easy.

You can dry-fit the tread right on the covered adhesive tape, and stairs can be walked on immediately after installation. And nora stepfix 240 is GREENGUARD Gold certified for low VOC emissions, helping to improve indoor air quality.



Art. 907

Dimension of rolls: 240 mm (~9.45 in) width x 50 m (164 ft) length = 12 m<sup>2</sup> (~129 SF)

### nora epoxy stair filler

A solvent-free, non-flammable, high-performance epoxy that sets to a hard, permanent bond. Use on stairs with greater than 1/4 inch radius or damaged edges to provide support under the stairtread nosing. Required for nora visually impaired strips.

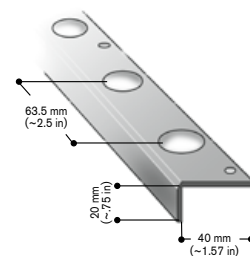


Art. 500875

- 13.5 oz dual cartridge applicator with special mixer application tip
- Two cartridge caulking gun required
- Coverage: ~40 LF with a .25 inch bead

### nora metal repair stair angle

Prep rounded, wavy, damaged or bowed steps with the nora metal repair stair angle prior to installing nora stairwell products.



Art. 6637

Piece Length: 1 m (~39.37 in)

- Screws: middle of hole to middle of hole 63.5 mm (~2.5 in)

On stairs with round nosing, nora metal repair stair angle and/or nora epoxy stair filler must be used to fill the void.

# nora visually impaired strips

norament stairtreads and nora stair nosings can be equipped with a range of nora visually impaired strips to guide users or mark the edge of stairs in areas with safety or accessibility concerns. Inserts are offered in textured or smooth surfaces and high-contrast colors. A photoluminescent option is also available on request.

### Textured VI:



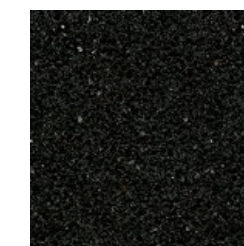
8011 CORAL RED



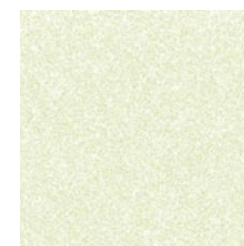
8012 SAFETY YELLOW



8014 OCEAN GREY



8015 BLACK



8016 NITE GLOW

### Smooth VI:



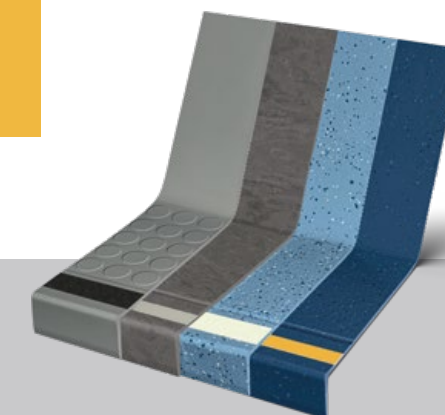
0122 LIGHT GREY



0597 BLACK



0895 YELLOW



To ensure safety and performance, nora epoxy stair filler is used under the nosing of stairtreads with nora visually impaired strips at installation.

## Why nora® rubber flooring?

### Product Benefits



#### Reduced Maintenance

Little more than water needed - no finishes, coatings or harsh chemicals necessary.



#### Quiet Acoustical Performance

Attenuate noise pollution.



#### Ergonomic Design

Add comfort underfoot, reducing foot and leg pain.



#### Durable Surface

Withstand extreme stress from heavy rolling loads and wheeled traffic.



#### Superior Slip Resistance

Help to create safer spaces.



#### Supports Infection Control

Disinfect thoroughly due to a dense, non-porous surface.

### Sustainability Verifications



#### Cradle to Cradle Certified® Silver

Certification of whether a product is safe, circular and responsibly made. Applies to nora 926 and 913 compound floor coverings and stair treads.



#### GREENGUARD Gold

All nora floor coverings & adhesives are certified for low VOC emissions.



#### Environmental Product Declaration (EPD)

A statement of product ingredients and environmental impacts over the entire life cycle of a product. A comprehensive life cycle assessment (LCA) is performed to ISO standards to develop an EPD, after which both the EPD and LCA must be third party verified. Applies to nora 926 and 913 compound floor coverings and stair treads, and ESD and acoustic floor coverings.



#### Health Product Declaration (HPD)

A transparency tool for evaluating whether a product supports Green Chemistry. As part of our work on Health and Materials, Interface continuously reduces the environmental and health impacts of our products through elimination of materials of concern. Applies to nora 926 and 913 compound floor coverings and stair treads, and ESD floor coverings.

### Integrated System

nora and Interface cover every area of your building – all from a single source. Create harmonious, space-specific design with our system of soft and resilient floor coverings, including special floorings, stair treads and accessories.

### Outstanding Service

From design to post-installation, we have the experts to support your project at every step and can even be a valued resource for your organization's sustainability mission.

### nora.com

For additional information regarding usage in recommended applications, contact us or visit [nora.com](http://nora.com).

#### ORDER SAMPLES

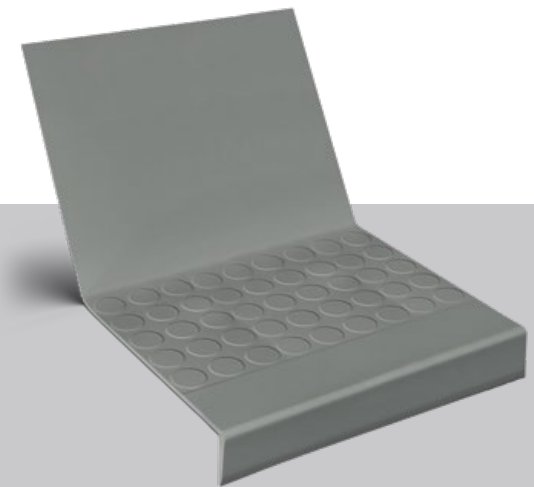
Online at [www.nora.com](http://www.nora.com)  
Call 1.800.332.NORA  
Email your sales rep or customer support specialist

#### BROWSE NORA.COM

- Find the right floor for your project with nora Flooring Finder
- Design your floor with the nora Room Designer
- Find technical and environmental documents

### nora Stairwell Solutions

Whether you choose norament stairtreads or pair nora floor coverings with stair nosings, rest easy knowing you have the high performance of nora rubber on your stairs.



#### norament stairtreads

In addition to the key benefits of all nora rubber flooring, norament stairtreads also offer:

- Installation efficiency of a pre-shaped stair nosing, riser and tread all-in-one piece and immediate trafficking with nora stepfix 240
- Pre-sanded backs
- Good for very heavy traffic
- High fire-retardant properties
- Visually impaired and photoluminescent strips for accessibility
- 15-year limited wear warranty\*

We have tried our very best to accurately represent product colors. However, due to the nature of printed materials, color of actual products may vary slightly. Please request a sample to see actual product color.

All product specifications reflect averages derived from product sample testing, are subject to normal manufacturing and testing tolerances and inherent pattern variances, and may be changed without notice. For more information about these and other important attributes of the product(s) described herein, including recycled content and limited warranty information, please see [nora.com](http://nora.com).

nora®, norament®, and noraplan® are trademarks owned by nora systems GmbH and registered in the United States, Canada, and other countries. Cradle to Cradle Certified® is a registered trademark of the Cradle to Cradle Products Innovation Institute. Other labels used here are trademarks of their respective owners.



Printed on 50% post consumer waste (PCW)  
fiber manufactured using wind power.

**nora systems, Inc.**  
9 Northeastern Blvd.  
Salem, NH 03079  
T: 800.332.NORA  
T: 603.894.1021  
info-us@nora.com  
www.nora.com