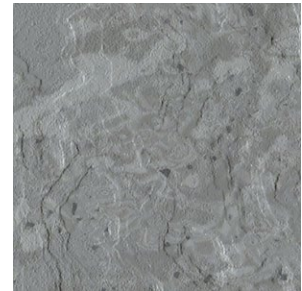


norament arago

Rubber tile floor covering combining a fine grain design and modern marbling with a flat, direction-oriented relief structure. No two tiles are the same – each tile is totally unique.



Product Construction Specifications

Product: norament® arago™ resilient tile floor covering, Article 3118

Material Composition: nora® vulcanized rubber compound 926 with environmentally compatible color pigments that are free of toxic heavy metals like lead, cadmium, or mercury

Material Size: 1004 mm x 502 mm (~39.53 in x 19.76 in)

Thickness: 3.5 mm (~0.14 in)

Dimensional Stability: Meets requirements

Construction: Homogeneous rubber compound with a random scattered design

Colors: 12 Standard

Surface: Relief Structure

Performance Standards

Flammability (E648/NFPA 253): ≥ 0.45 watts/sq. cm for Class 1 is required	NBSIR 75 950, 0.94
Smoke Density (ASTM E662): < 450 is required	NBS, 296 (flaming) and 16 (non-flaming)
Surface Burning (CAN/ULC-S102.2):	FSC1 of 75 and SD of 470
Slip Resistance (ASTM D2047): ≥ 0.5 is required	Static coefficient of friction, Neolite dry 0.81 Neolite wet 0.87
Bacteria Resistance (ASTM E2180/ASTM G21):	Resistant to bacteria, fungi, and micro-organism activity
Sound Absorption (ASTM E2179/ISO 10140-3):	ΔIIC 18, ΔLw 10 dB (compare only Δ values)
Hardness (ASTM D2240): ≥ 70 is required	Shore type A, 82
Static Load (ASTM F970): ≤ 0.005 in with 250 lbs is required	Residual compression of 0.004 in with 800 lbs
Rolling Load Limit (ASTM F2753):	≤ 850 lbs/sq in; for forklift traffic nora polyurethane adhesive is required
Abrasion Resistance (ASTM D3389): ≤ 0.035 oz (1.0 g) is required	1.1 lbs (500 g) load on H-18 wheel with 1000 cycles, 0.008 oz (0.24 g) weight loss
Oil & Grease Resistance (ISO 26987):	Pass

Health + Environmental Specifications

Embodied Carbon (Cradle to Gate): 17.2 kg CO_{2e}/m³

Indoor Air Quality: GREENGUARD Gold Certified for low VOC emissions in compliance with CDPH 01350

Discloser of Environmental Impact: Environmental Product Declarations (EPDs)

Disclosure of Product Ingredients: Health Product Declarations (HPDs)

Additional Certification and Transparency Documentation: Cradle to Cradle Certified® Silver; Greenhealth Approved.

LEED v4: Contributes to multiple IEQ and MR credits

Material Composition: Free of added formaldehyde, heavy metals and ortho-phthalates, fluorinated chemicals (PFAS), and halogenated flame retardants

Production Plant Certifications: ISO 9001:2000, ISO 14001

Installation

Site Conditions: The installation area must be fully enclosed, weather tight, and climate controlled between 63°F and 75°F and 40% to 60% ambient relative humidity (RH) for at least 48 hours prior, during and 72 hours after installation.

Adhesive:

- Absorptive substrates: use nora® AC MR95™, nora® PU MR95™, or nora dryfix™ 750 mr adhesives
- Non-absorptive substrates: use nora PU MR95 or nora dryfix 750 adhesives

Unique Characteristics:

- Good for very heavy traffic
- Superior footfall sound absorption
- Superior slip resistance
- High fire-retardant properties
- Monolithic seamless installation with coordinating weld
- Welding not required, unless specified
- Tile design allows for various design layouts, as well as the flexibility to change the aesthetic by adding a beveled edge (Art. 3119)

For complete installation instructions refer to the nora Installation Instructions.

Care and Cleaning

No finishes/coatings or harsh chemicals necessary. A post-installation cleaning must be performed before the area is occupied. Refer to the nora Maintenance Guidelines.

Wheel Types

No metal or hard plastic wheels, the shape of the contact surface of wheels must be flat with round edges. The shore hardness must be Type A ≤ 90.

Storage

nora flooring can be stored within a temperature range of -5°F (-21°C) to 120°F (49°C) under the following conditions: Pallets must remain intact with sheet goods standing on end, undamaged, not be stacked, be in a permanently dry environment, and with no direct sunlight. However, all adhesives and cold weld must remain at room temperature without freezing.

Warranty

Limited 15-year warranty. Refer to the nora Limited Warranty - Americas.

Current nora Installation Instructions, Guide Specifications, Maintenance Guidelines, and Limited Warranties, can be found at www.nora.com.

nora®, *norament®*, and *noraplan®* are trademarks owned by nora systems GmbH and registered in the United States, Canada, and other countries. *Cradle to Cradle Certified®* is a registered trademark of the Cradle to Cradle Products Innovation Institute. Other labels used here are trademarks of their respective owners.

Updated: April 2024

nora systems, Inc.
9 Northeastern Blvd.
Salem, NH 03079
T: 800.332.NORA
T: 603.894.1021
info-us@nora.com
www.nora.com

nora®
by **Interface**®